



WARVK260  
 ○ 500 l m<sup>2</sup>  
 matt  
 hellbeige | light beige



WARVK261  
 ○ 500 l m<sup>2</sup>  
 matt  
 hellgrau | light grey



WARVK266  
 ○ 500 l m<sup>2</sup>  
 matt  
 beige | beige



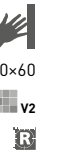
WARVK267  
 ○ 500 l m<sup>2</sup>  
 matt  
 grau | grey



WARVK262  
 ○ 500 l m<sup>2</sup>  
 matt  
 braun | brown



WARVK263  
 ○ 500 l m<sup>2</sup>  
 matt  
 grau | grey



Produkt | product



30x60

298-598x8

EN 14411 - L BIII

8

5,56

1,44

40

57,60

21,3

14,8

876

Wandfliese | wall tile

Die Produktverpackung enthält zufällige Designmöglichkeiten. | The products are deliberately mixed in packing to include a random selection of designs.





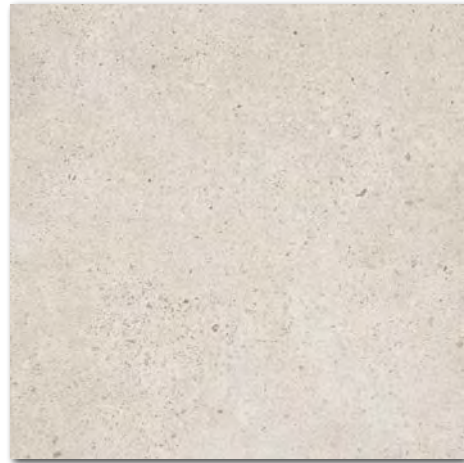
60x60

R10

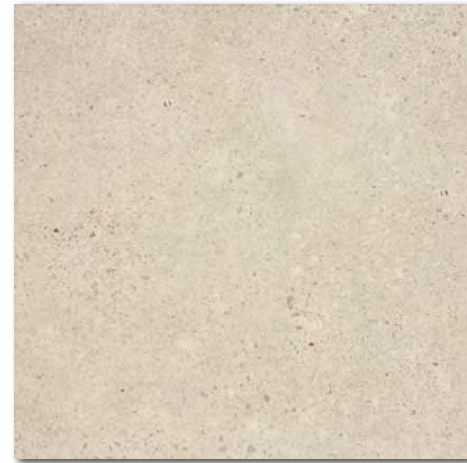
B

V3

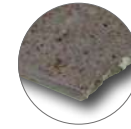
R



DAK63786  
○ 560 l m<sup>2</sup>  
matt



DAK63787  
○ 560 l m<sup>2</sup>  
matt



DAK63788  
○ 560 l m<sup>2</sup>  
matt



DAK63789  
○ 560 l m<sup>2</sup>  
matt



60x60

R10

B

V3

R

30x60

R10

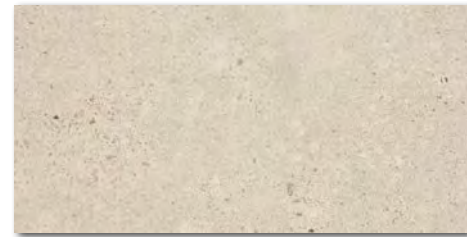
B

V3

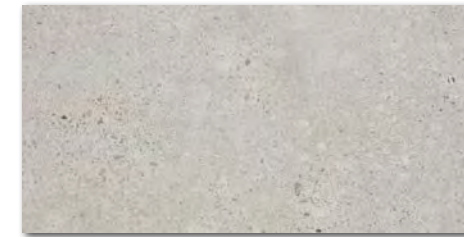
R



DAKSE786  
○ 540 l m<sup>2</sup>  
matt



DAKSE787  
○ 540 l m<sup>2</sup>  
matt



DAKSE788  
○ 540 l m<sup>2</sup>  
matt



DAKSE789  
○ 540 l m<sup>2</sup>  
matt

30x60

R10

B

V3

R

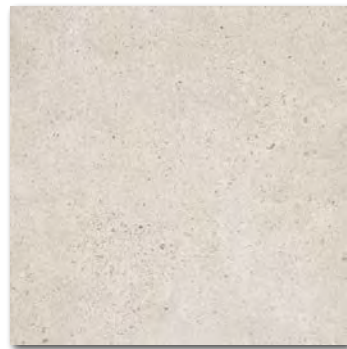
45x45

R10

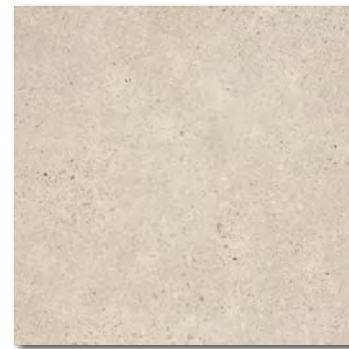
B

V3

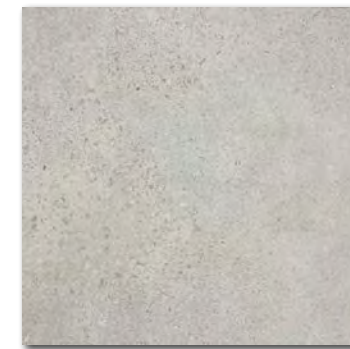
R



DAA4H786  
○ 510 l m<sup>2</sup>  
matt  
elfenbein | ivory



DAA4H787  
○ 510 l m<sup>2</sup>  
matt  
beige | beige



DAA4H788  
○ 510 l m<sup>2</sup>  
matt  
hellgrau | light grey



DAA4H789  
○ 510 l m<sup>2</sup>  
matt  
schwarz | black

45x45

R10

B

V3

R

| Produkt   product        | mm    | mm         | EN               | Stk | Stk/m <sup>2</sup> | mm <sup>2</sup> | mm <sup>2</sup> | mm <sup>2</sup> | kg   | kg/m <sup>2</sup> | Deckung kg |
|--------------------------|-------|------------|------------------|-----|--------------------|-----------------|-----------------|-----------------|------|-------------------|------------|
| Bodenfliese   floor tile | 60x60 | 598x598x10 | EN 14411 - G Bla | 3   | 2,8                | 1,08            | 32              | 34,56           | 23,7 | 21,9              | 782        |
| Bodenfliese   floor tile | 30x60 | 298x598x10 | EN 14411 - G Bla | 6   | 5,6                | 1,08            | 40              | 43,20           | 23,7 | 21,9              | 971        |
| Bodenfliese   floor tile | 45x45 | 448x448x8  | EN 14411 - G Bla | 6   | 5                  | 1,21            | 34              | 41,14           | 21,1 | 17,4              | 741        |

Empfohlene Formatkombinationen siehe Seite 484-485. | Recommended combinations of modular sizes see pages 484-485.

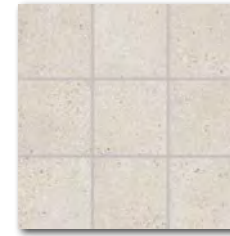
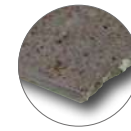




Die Fliesen der Serie zeichnen sich durch ein breites Farbspiel V3 aus. | All products of the entire batch show big deviations in shade difference V3.

Wir empfehlen, einzelne Fliesen aus mehreren Paketen herauszunehmen und den gesamten Bodenbelag nach der Inspirationsfotodokumentation in den Katalogen RAKO, eventuell den Webseiten [www.rako.eu](http://www.rako.eu), zu komponieren. Wünschenswert ist die Kombination aller Fliesendesigns einschließlich ihrer Drehung um 90° oder 180°, sodass ausgewogene Optik der verlegten Fläche erzielt wird.

Before laying the tiles, we suggest you select from several cartons and arrange them as illustrated in the inspiration photo documentation in RAKO catalogues or website [www.rako.eu](http://www.rako.eu), and mix the tiles to achieve the required result including turning them by 90° or 180°.



DAK12786 (SHEET)  
○ 970 l m<sup>2</sup>  
matt



DAK12787 (SHEET)  
○ 970 l m<sup>2</sup>  
matt



DAK12788 (SHEET)  
○ 970 l m<sup>2</sup>  
matt



DAK12789 (SHEET)  
○ 970 l m<sup>2</sup>  
matt



DDM06786 (SHEET)  
○ 440 l Netz  
matt  
elfenbein | ivory



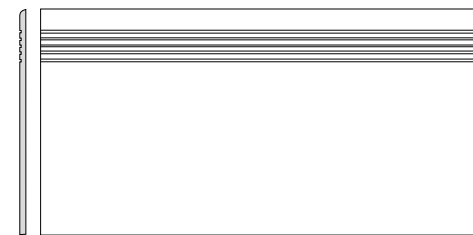
DDM06787 (SHEET)  
○ 440 l Netz  
matt  
beige | beige



DDM06788 (SHEET)  
○ 440 l Netz  
matt  
hellgrau | light grey



DDM06789 (SHEET)  
○ 440 l Netz  
matt  
schwarz | black



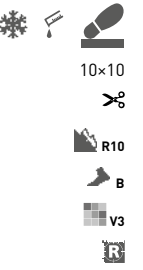
DCPSE786 elfenbein | ivory  
DCPSE787 beige | beige  
DCPSE788 hellgrau | light grey  
DCPSE789 schwarz | black  
○ 370 l St  
matt



DSAS4786 elfenbein | ivory  
DSAS4787 beige | beige  
DSAS4788 hellgrau | light grey  
DSAS4789 schwarz | black  
○ 220 l St  
matt



DSAPS786 elfenbein | ivory  
DSAPS787 beige | beige  
DSAPS788 hellgrau | light grey  
DSAPS789 schwarz | black  
○ 200 l St  
matt



| Produkt   product                             | cm     | mm         | EN                   | St/m <sup>2</sup> | kg/m <sup>2</sup> | St/m <sup>2</sup> | kg/m <sup>2</sup> | St/m <sup>2</sup> | kg/m <sup>2</sup> | St/m <sup>2</sup> | kg/m <sup>2</sup> |
|---|--------|------------|----------------------|-------------------|-------------------|-------------------|-------------------|-------------------|-------------------|-------------------|-------------------|
| Bodenfliese   floor tile                      | 10x10  | 98x98x10   | EN 14411 - G B1a     | 10                | 11                | 0,91              | 56                | 50,96             | 19,9              | 21,9              | 1.142             |
| Mosaik sheet 30x30 cm   mosaic sheet 30x30 cm | 5x5    | 48x48x10   | EN 14411 - G B1a     | 3                 | 11                | 0,27              | -                 | -                 | 5,9               | 21,9              | -                 |
| Stufe   step tile                             | 30x60  | 298x598x10 | STO No. 030 - 059824 | 6                 | 5,6               | 1,08              | 40                | -                 | 23,7              | 21,9              | -                 |
| Sockel   skirting plinth                      | 60x9,5 | 598x95x10  | STO No. 030 - 059824 | 13                | 17,5              | 0,74              | -                 | -                 | 16,2              | 21,9              | -                 |
| Sockel   skirting plinth                      | 45x8,5 | 448x85x8   | STO No. 030 - 059824 | 25                | 26,1              | 0,96              | -                 | -                 | 16,7              | 17,4              | -                 |