





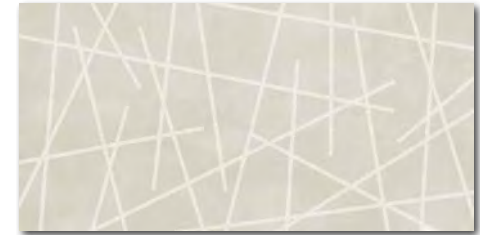
WADV820
 ○ 480 l m²
 matt | **V3**

WARVK820
 ○ 500 l m²
 matt | **V3** | **DF**



WADV821
 ○ 480 l m²
 matt | **V3**

WARVK821
 ○ 500 l m²
 matt | **V3** | **DF**



WADV826
 ○ 480 l m²
 matt | glossy | **V4**



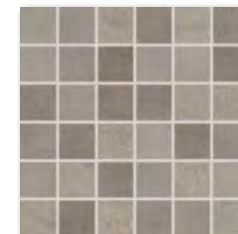
WARVK833
 ○ 500 l m²
 matt | glossy | **V4** | **DF**



WARVK831
 ○ 500 l m²
 matt | glossy | **V4** | **DF**



WDM05820 (SHEET)
 ○ 320 l Netz
 matt
 elfenbein | ivory



WDM05821 (SHEET)
 ○ 320 l Netz
 matt
 braun-grau | brown-grey



30x60

5x5 | 30x30



Produkt product	cm	mm	EN	Stk/m ²	Stk/m ²	Stk/m ²	Stk/m ²	Stk/m ²	kg	kg/m ²	brutto kg
Wandfliese wall tile	30x60	298x598x8	EN 14411 - L BIII	8	5,56	1,44	40	57,60	21,3	14,8	876
Mosaik sheet 30x30 cm mosaic sheet 30x30 cm	5x5	48x48x8	STO No. 030 - 059826	4	11	0,36	-	-	5,2	14,8	-

Das Produkt zeigt die individuellen Designmöglichkeiten auf in jeder Verpackung. | This product is deliberately mixed in packing to include a random selection of designs.



30x60



WADVK822
○ 480 l m²
matt | **V3**

WARVK822
○ 500 l m²
matt | **V3**



WADVK823
○ 480 l m²
matt | **V3**

WARVK823
○ 500 l m²
matt | **V3**



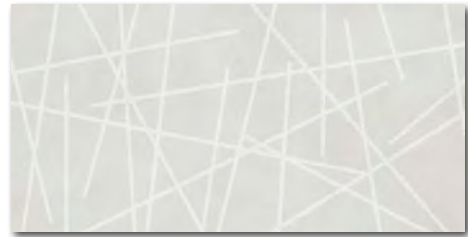
WADVK824
○ 480 l m²
matt | **V3**

WARVK824
○ 500 l m²
matt | **V3**



WADVK825
○ 480 l m²
matt | **V3**

WARVK825
○ 500 l m²
matt | **V3**



WADVK827
○ 480 l m²
mattlglossy | **V4**



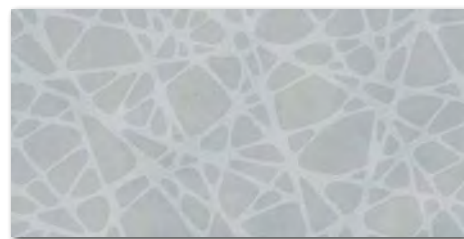
WADVK828
○ 480 l m²
mattlglossy | **V4**



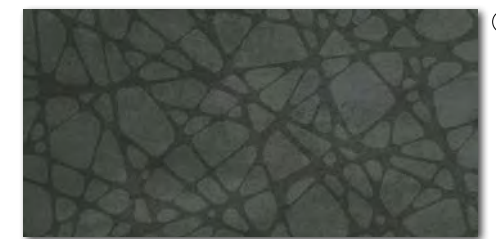
WADVK829
○ 480 l m²
mattlglossy | **V4**



WARVK834
○ 500 l m²
mattlglossy | **V4**



WARVK835
○ 500 l m²
mattlglossy | **V4**



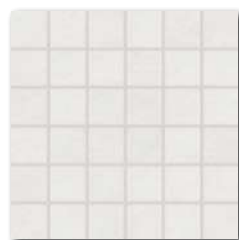
WARVK836
○ 500 l m²
mattlglossy | **V4**



WARVK832
○ 500 l m²
mattlglossy | **V4**



5x5 | 30x30



WDM05822 (SHEET)
○ 320 l Netz
matt
weiß | white



WDM05823 (SHEET)
○ 320 l Netz
matt
hellgrau | light grey

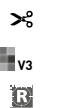


WDM05824 (SHEET)
○ 320 l Netz
matt
dunkelgrau | dark grey



WDM05825 (SHEET)
○ 320 l Netz
matt
schwarz | black

5x5 | 30x30



Produkt | product



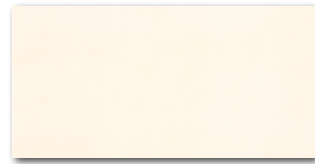
Wandfliese | wall tile 30x60 298x598x8 EN 14411 - L BIII 8 5,56 1,44 40 57,60 21,3 14,8 876
Mosaik sheet 30x30 cm | mosaic sheet 30x30 cm 5x5 48x48x8 STO No. 030 - 059826 4 11 0,36 - - 5,2 14,8 -

Das Produkt zeigt die individuellen Designmöglichkeiten auf in jeder Verpackung. | This product is deliberately mixed in packing to include a random selection of designs.

20x40



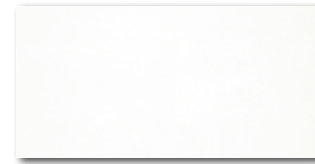
WADMB719
○ 440 | m²
matt | **V2**



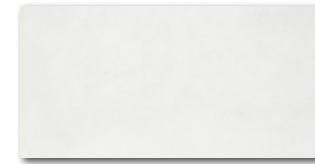
WADMB720
○ 440 | m²
matt | **V2**



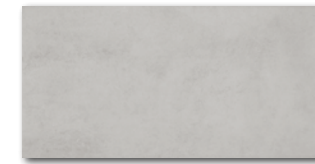
WADMB721
○ 440 | m²
matt | **V2**



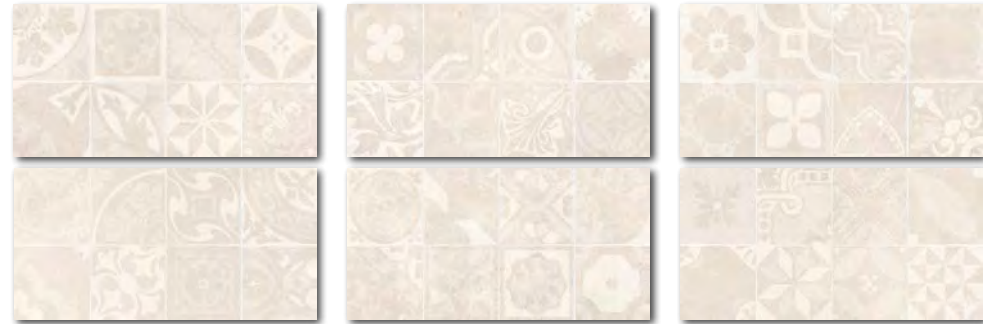
WADMB722
○ 440 | m²
matt | **V2**



WADMB723
○ 440 | m²
matt | **V2**



WADMB724
○ 440 | m²
matt | **V2**



WADMB220
○ 440 | m²
matt | **V4**
elfenbein | ivory



WADMB223
○ 440 | m²
matt | **V4**
hellgrau | light grey

40x2



WLRMG719
○ 240 | St
matt



WLRMG720
○ 240 | St
matt



WLRMG721
○ 240 | St
matt



WLRMG722
○ 240 | St
matt



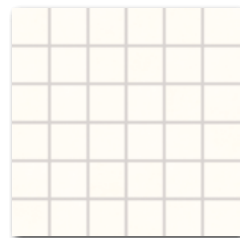
WLRMG723
○ 240 | St
matt



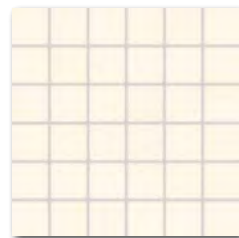
WLRMG724
○ 240 | St
matt

5x5 | 30x30

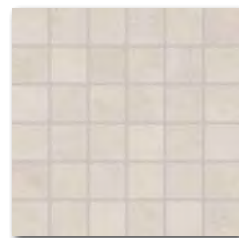
V2



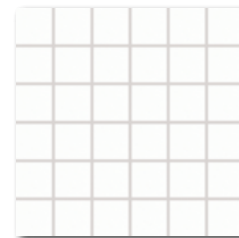
WDM05719 (SHEET)
○ 320 | Netz
matt
weiß-beige | white-beige



WDM05720 (SHEET)
○ 320 | Netz
matt
elfenbein | ivory



WDM05721 (SHEET)
○ 320 | Netz
matt
braun-grau | brown-grey



WDM05722 (SHEET)
○ 320 | Netz
matt
weiß-grau | white-grey



WDM05723 (SHEET)
○ 320 | Netz
matt
hellgrau | light grey



WDM05724 (SHEET)
○ 320 | Netz
matt
dunkelgrau | dark grey

Produkt | product

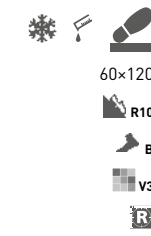
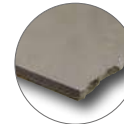
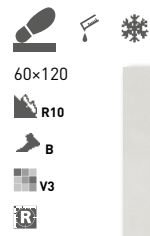


Produkt product	20x40	198x398x7	EN 14411 - L BIII	20	12,5	1,60	48	76,80	20,6	12,9	1 016
Wandfliese wall tile	20x40	198x398x7	EN 14411 - L BIII	20	12,5	1,60	48	76,80	20,6	12,9	1 016
Bordüre relief listel	40x2	398x20	STO No. 030 - 060753	12	125	0,09	-	-	1,7	18,9	-
Mosaik sheet 30x30 cm mosaic sheet 30x30 cm	5x5	48x48x7	STO No. 030 - 059826	3/4	11	0,27/0,36	-	-	3,5/4,8	12,9	-

Das Produkt zeigt die individuellen Designmöglichkeiten auf in jeder Verpackung. | This product is deliberately mixed in packing to include a random selection of designs.

5x5 | 30x30

V2



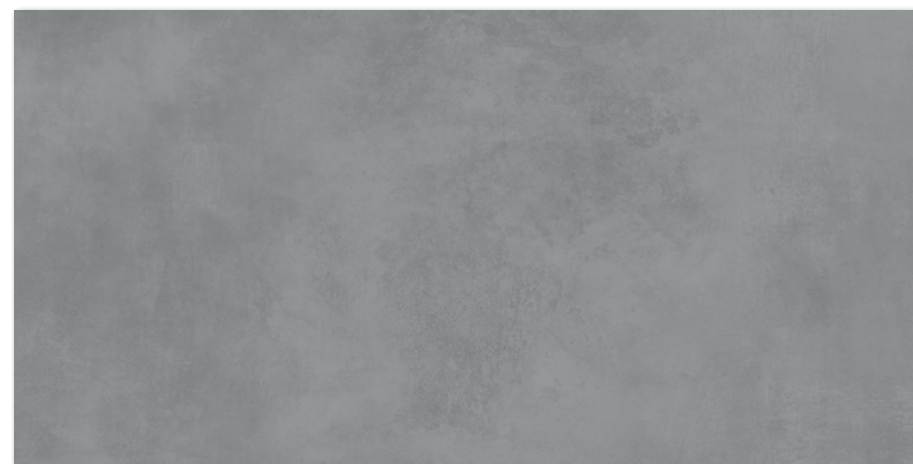
DARV1722
PEI 5 \odot 700 | m²
matt
weiß | white



DARV1723
PEI 4 \odot 700 | m²
matt
hellgrau | light grey



DARV1720
PEI 5 \odot 700 | m²
matt
elfenbein | ivory



DARV1724
PEI 4 \odot 700 | m²
matt
dunkelgrau | dark grey



DARV1721
PEI 4 \odot 700 | m²
matt
braun-grau | brown-grey



DARV1725
PEI 4 \odot 700 | m²
matt
schwarz | black

Produkt | product



Bodenfliese | floor tile

60x120

598x1198x10

EN 14411 - G Bla

2

1,4

1,44

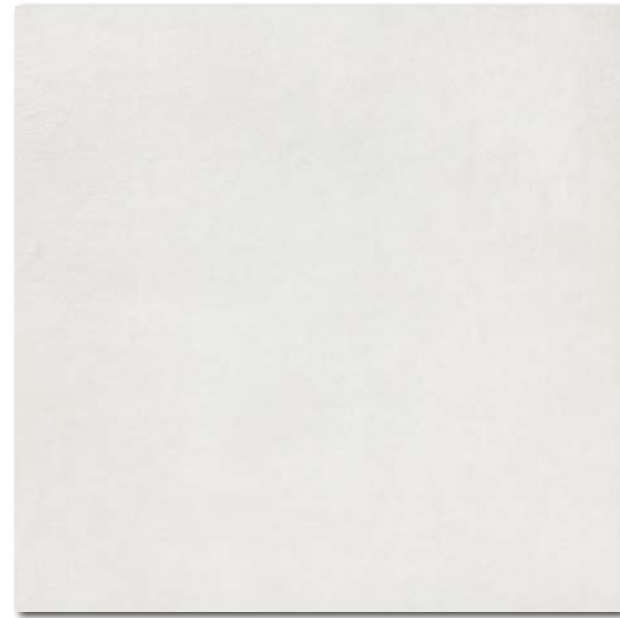
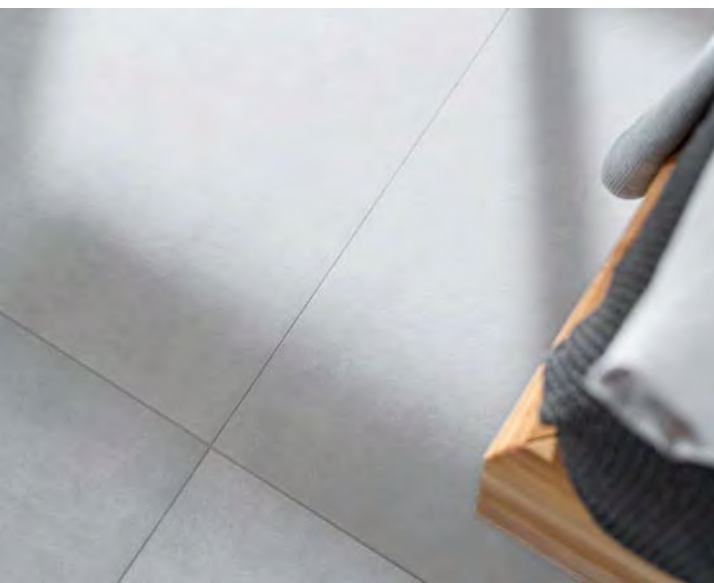
27

38,88

32,7

22,7

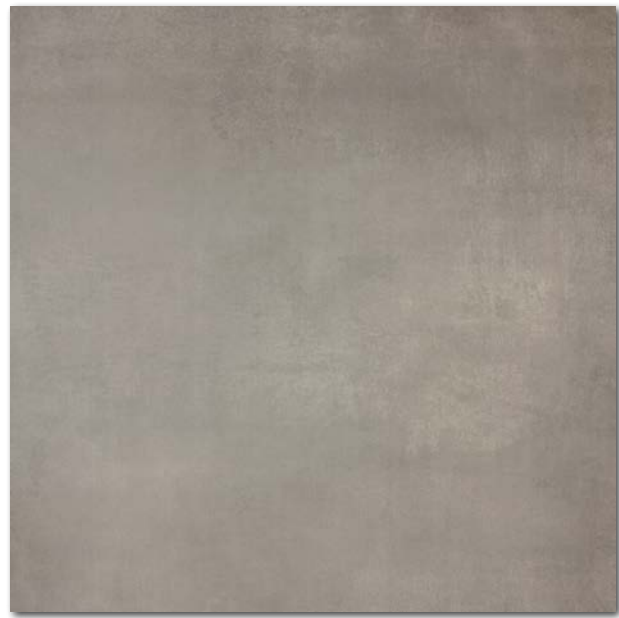
908



DAR81722
PEI 5 ○ 700 | m²
matt



DAR81720
PEI 5 ○ 700 | m²
matt



DAR81721
PEI 4 ○ 700 | m²
matt



DAR84722
PEI 5 ○ 720 | m²
matt
weiß | white



DAR84720
PEI 5 ○ 720 | m²
matt
elfenbein | ivory

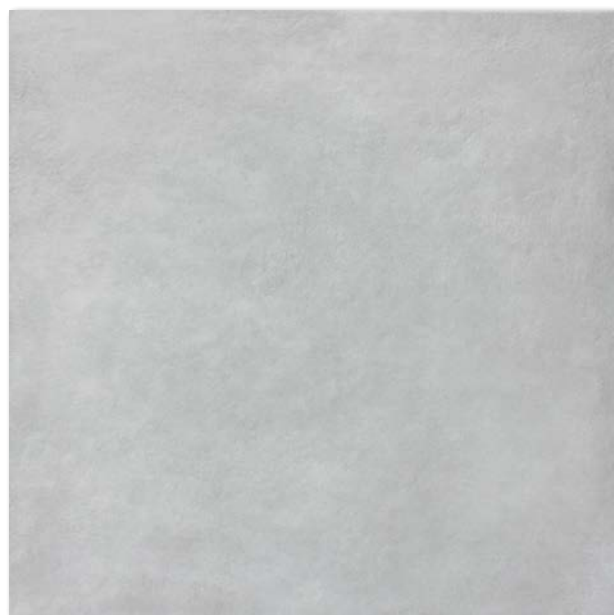


DAR84721
PEI 4 ○ 720 | m²
matt
braun-grau | brown-grey



Produkt product	cm	mm	EN	Stk/m ²	Stk/m ²	Stk/m ²	Stk/m ²	kg	kg/m ²	Stücke/kg	
Bodenfliese floor tile	80-80	798-798-10	EN 14411 - G Bla	2	1,6	1,28	42	53,76	28,0	21,9	1 202
Bodenfliese floor tile	40-80	398-798-10	EN 14411 - G Bla	4	3,1	1,28	42	53,76	28,0	21,9	1 202

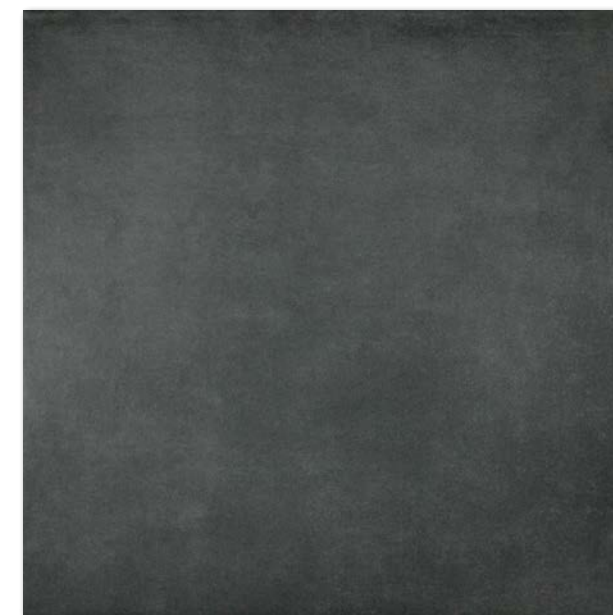
Empfohlene Formatkombinationen siehe Seite 484-485. | Recommended combinations of modular sizes see pages 484-485.



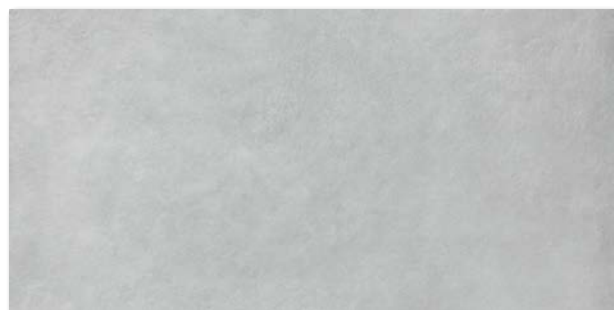
DAR81723
PEI 4 ○ 700 | m²
matt



DAR81724
PEI 4 ○ 700 | m²
matt



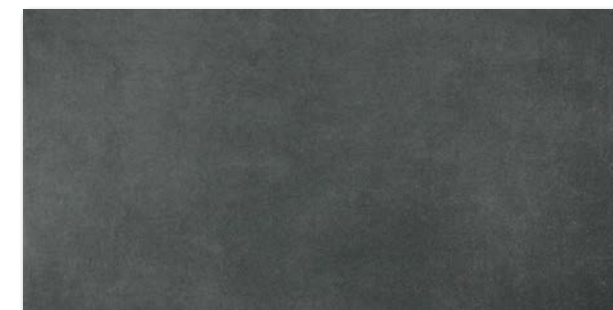
DAR81725
PEI 4 ○ 700 | m²
matt



DAR84723
PEI 4 ○ 720 | m²
matt
hellgrau | light grey



DAR84724
PEI 4 ○ 720 | m²
matt
dunkelgrau | dark grey



DAR84725
PEI 4 ○ 720 | m²
matt
schwarz | black



RAKO Home

Produkt | product

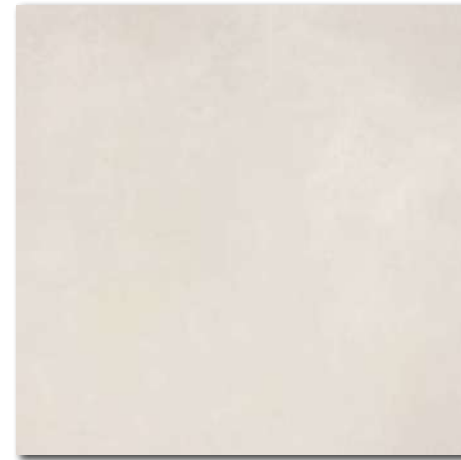


Bodenfliese floor tile	80-80	798-798-10	EN 14411 - G Bla	2	1,6	1,28	42	53,76	28,0	21,9	1 202
Bodenfliese floor tile	40-80	398-798-10	EN 14411 - G Bla	4	3,1	1,28	42	53,76	28,0	21,9	1 202

Empfohlene Formatkombinationen siehe Seite 484-485. | Recommended combinations of modular sizes see pages 484-485.



DAR63722
PEI 5 ○ 560 l m²
matt



DAR63720
PEI 5 ○ 560 l m²
matt



DAR63721
PEI 4 ○ 560 l m²
matt



DARSE722
PEI 5 ○ 540 l m²
matt



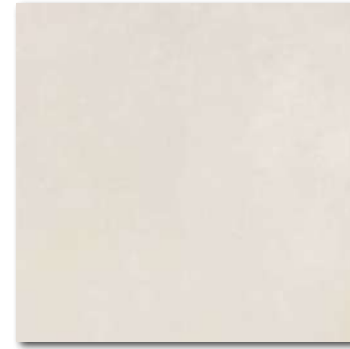
DARSE720
PEI 5 ○ 540 l m²
matt



DARSE721
PEI 4 ○ 540 l m²
matt



DAR4H722
PEI 5 ○ 520 l m²
matt



DAR4H720
PEI 5 ○ 520 l m²
matt



DAR4H721
PEI 4 ○ 520 l m²
matt



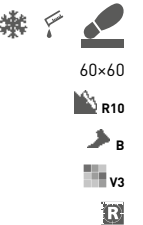
DDVP4722 (SHEET)
PEI 5 ○ 610 l Netz
matt
weiß | white



DDVP4720 (SHEET)
PEI 5 ○ 610 l Netz
matt
elfenbein | ivory

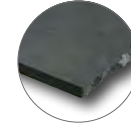
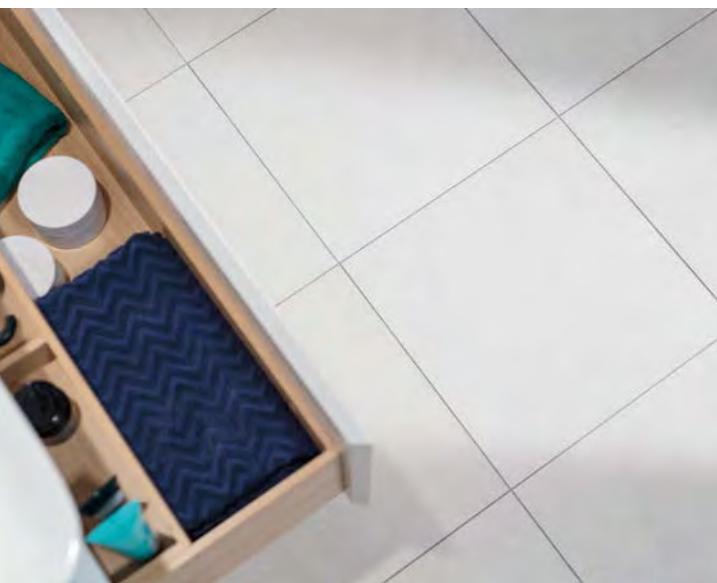


DDVP4721 (SHEET)
PEI 4 ○ 610 l Netz
matt
braun-grau | brown-grey



Produkt product	cm	mm	EN	St/m ²	kg/m ²	kg/m ²	kg/m ²	kg/m ²	kg/m ²	kg/m ²	
Bodenfliese floor tile	60-60	598-598-10	EN 14411 - G Bla	3	2,8	1,08	32	34,56	23,7	21,9	782
Bodenfliese floor tile	30-60	298-598-10	EN 14411 - G Bla	6	5,6	1,08	40	43,20	23,7	21,9	971
Bodenfliese floor tile	45-45	445-445-8	EN 14411 - G Bla	6	5	1,21	34	41,14	21,1	17,4	741
Bodenfliese floor tile	30-45	298-445-8	EN 14411 - G Bla	5	7,4	0,68	36	-	10,5	17,4	-

Empfohlene Formatkombinationen siehe Seite 484-485. | Recommended combinations of modular sizes see pages 484-485.



DAR63723
PEI 4 ○ 560 l m²
matt



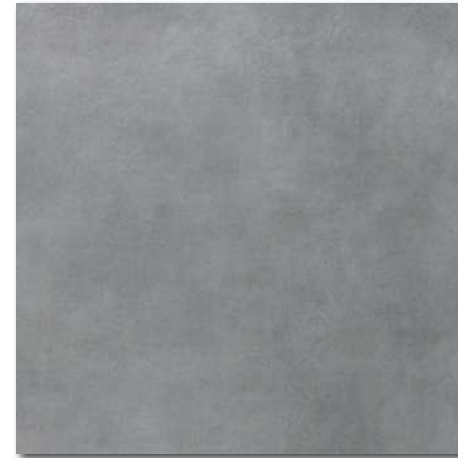
DARSE723
PEI 4 ○ 540 l m²
matt



DAR4H723
PEI 4 ○ 520 l m²
matt



DDVP4723 (SHEET)
PEI 4 ○ 610 l Netz
matt
hellgrau | light grey



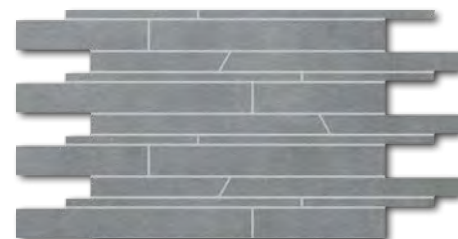
DAR63724
PEI 4 ○ 560 l m²
matt



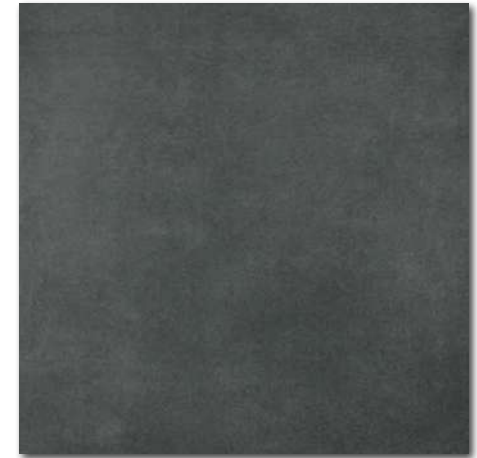
DARSE724
PEI 4 ○ 540 l m²
matt



DAR4H724
PEI 4 ○ 520 l m²
matt



DDVP4724 (SHEET)
PEI 4 ○ 610 l Netz
matt
dunkelgrau | dark grey



DAR63725
PEI 4 ○ 560 l m²
matt



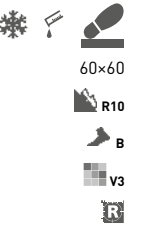
DARSE725
PEI 4 ○ 540 l m²
matt



DAR4H725
PEI 4 ○ 520 l m²
matt



DDVP4725 (SHEET)
PEI 4 ○ 610 l Netz
matt
schwarz | black



60x60

R10

B

V3

R

30x60

R10

B

V3

R

45x45

R10

B

V3

R

30x45

R10

B

V3

R

Produkt | product



EN



St/m²



m²



kg



kg/m²



kg

Produkt product	cm	mm	EN	St	St/m ²	m ²	m ²	kg	kg/m ²	kg	
Bodenfliese floor tile	60-60	598-598-10	EN 14411 - G Bla	3	2,8	1,08	32	34,56	23,7	21,9	782
Bodenfliese floor tile	30-60	298-598-10	EN 14411 - G Bla	6	5,6	1,08	40	43,20	23,7	21,9	971
Bodenfliese floor tile	45-45	445-445-8	EN 14411 - G Bla	6	5	1,21	34	41,14	21,1	17,4	741
Bodenfliese floor tile	30-45	298-445-8	EN 14411 - G Bla	5	7,4	0,68	36	-	10,5	17,4	-

Empfohlene Formatkombinationen siehe Seite 484-485. | Recommended combinations of modular sizes see pages 484-485.



30x30
20x20
10x10
5x5 | 30x30

R10
B
V3



DAR34722
PEI 5 ○ 390 | m²
matt
weiß | white



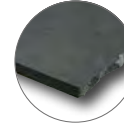
DAR26722
PEI 5 ○ 780 | m²
matt |



DAR12722 [SHEET]
PEI 5 ○ 970 | m²
matt |



DDM06722 [SHEET]
PEI 5 ○ 440 | Netz
matt |



DAR34723
PEI 4 ○ 390 | m²
matt
hellgrau | light grey



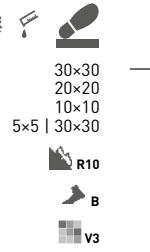
DAR26723
PEI 4 ○ 780 | m²
matt |



DAR12723 [SHEET]
PEI 4 ○ 970 | m²
matt |



DDM06723 [SHEET]
PEI 4 ○ 440 | Netz
matt |

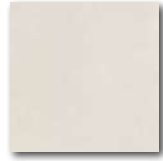


30x30
20x20
10x10
5x5 | 30x30

R10
B
V3



DAR34720
PEI 5 ○ 390 | m²
matt
elfenbein | ivory



DAR26720
PEI 5 ○ 780 | m²
matt |



DAR12720 [SHEET]
PEI 5 ○ 970 | m²
matt |



DDM06720 [SHEET]
PEI 5 ○ 440 | Netz
matt |



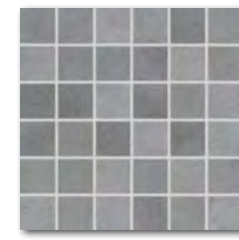
DAR34724
PEI 4 ○ 390 | m²
matt
dunkelgrau | dark grey



DAR26724
PEI 4 ○ 780 | m²
matt |



DAR12724 [SHEET]
PEI 4 ○ 970 | m²
matt |



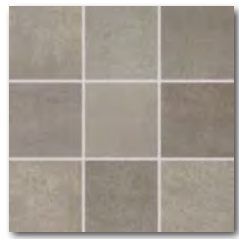
DDM06724 [SHEET]
PEI 4 ○ 440 | Netz
matt |



DAR34721
PEI 4 ○ 390 | m²
matt
braun-grau | brown-grey



DAR26721
PEI 4 ○ 780 | m²
matt |



DAR12721 [SHEET]
PEI 4 ○ 970 | m²
matt |



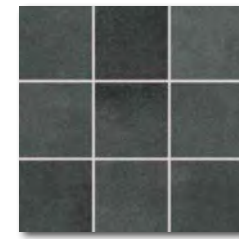
DDM06721 [SHEET]
PEI 4 ○ 440 | Netz
matt |



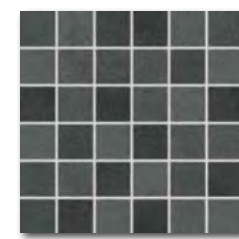
DAR34725
PEI 4 ○ 390 | m²
matt
schwarz | black



DAR26725
PEI 4 ○ 780 | m²
matt |

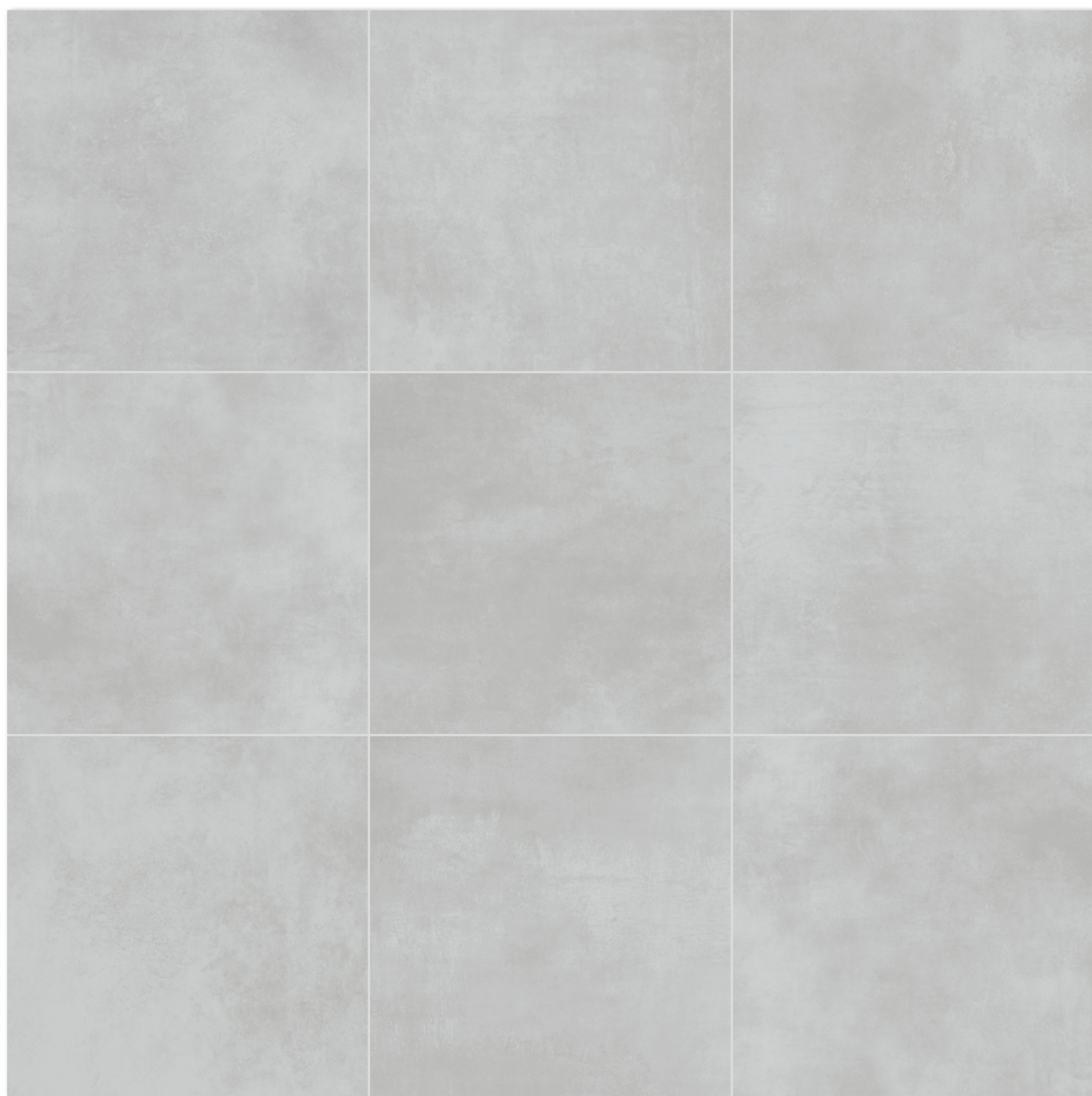


DAR12725 [SHEET]
PEI 4 ○ 970 | m²
matt |



DDM06725 [SHEET]
PEI 4 ○ 440 | Netz
matt |

Produkt product	cm	mm	EN		St/m ²				kg/m ²	kg/m ²	
Bodenfliese floor tile	30x30	298x298x8	EN 14411 - G Bla	13	11	1,18	48	56,64	20,5	17,4	1 011
Bodenfliese floor tile	20x20	197x197x10	EN 14411 - G Bla	23	25	0,92	57	52,44	20,1	21,9	1 174
Bodenfliese floor tile	10x10	98x98x10	EN 14411 - G Bla	10	11	0,91	56	50,96	19,9	21,9	1 142
Mosaik sheet 30x30 cm mosaic sheet 30x30 cm	5x5	48x48x10	EN 14411 - G Bla	3	11	0,27	-	-	5,9	21,9	-

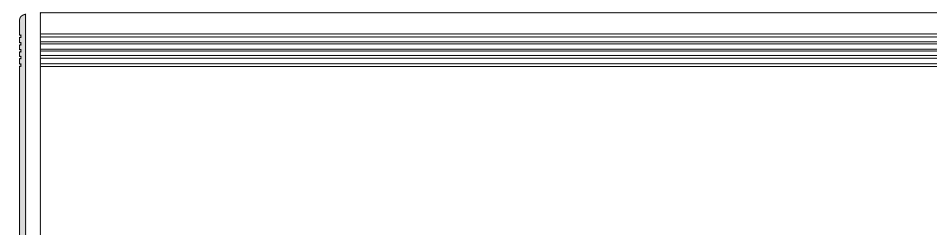


Die Fliesen der Serie zeichnen sich durch ein breites Farbspiel V3 aus. | All products of the entire batch show big deviations in shade difference V3.

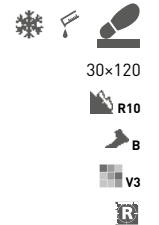
Wir empfehlen, einzelne Fliesen aus mehreren Paketen herauszunehmen und den gesamten Bodenbelag nach der Inspirationsfotodokumentation in den Katalogen RAKO, eventuell den Webseiten www.rako.eu, zu komponieren. Wünschenswert ist die Kombination aller Fliesendesigns einschließlich ihrer Drehung um 90° oder 180°, sodass ausgewogene Optik der verlegten Fläche erzielt wird.

Before laying the tiles, we suggest you select from several cartons and arrange them as illustrated in the inspiration photo documentation in RAKO catalogues or website www.rako.eu, and mix the tiles to achieve the required result including turning them by 90° or 180°.

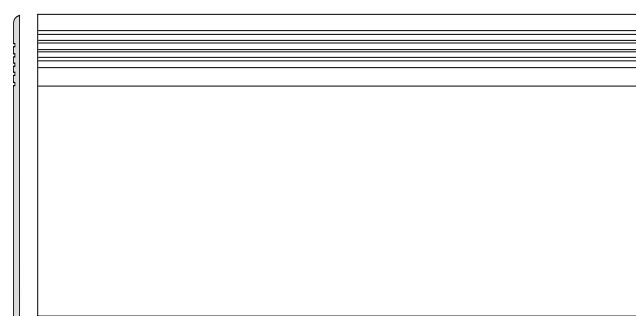
Produkt product	cm	mm	EN	St/m ²	kg/m ²	mm ²	mm ²	mm ²	mm ²	kg	kg/m ²	barutto kg
Stufe step tile	30x120	298-1198x10	STO No. 030 - 059824	3/5	2,8	1,08/1,8	-	-	-	24,6/40,9	22,7	-
Stufe step tile	40x80	398-798x10	STO No. 030 - 059824	2	3,1	0,64	-	-	-	14,1	21,9	-
Stufe step tile	30x60	298-598x10	STO No. 030 - 059824	6	5,6	1,08	40	-	-	23,7	21,9	-
Sockel skirting plinth	80x9,5	798-95x10	STO No. 030 - 059824	10	13,2	0,76	-	-	-	16,7	21,9	-
Sockel skirting plinth	60x9,5	598-95x10	STO No. 030 - 059824	13	17,5	0,74	-	-	-	16,2	21,9	-
Sockel skirting plinth	45x8,5	445-85x8	STO No. 030 - 059824	25	26,1	0,96	-	-	-	16,7	17,4	-
Stufenformteil special step tile	40x80	398-798x10	STO No. 030 - 059824	2	-	-	-	-	-	-	-	-
Stufenformteil special step tile	30x120	298-1198x10	STO No. 030 - 059824	2	-	-	-	-	-	-	-	-



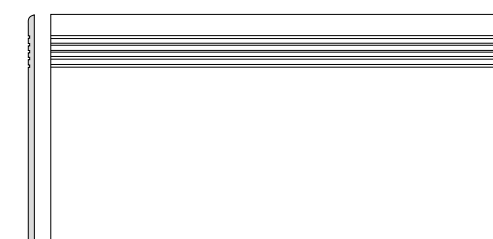
DCPVF720 elfenbein | ivory
 DCPVF721 braun-grau | brown-grey
 DCPVF722 weiß | white
 DCPVF723 hellgrau | light grey
 DCPVF724 dunkelgrau | dark grey
 DCPVF725 schwarz | black
 PEI 4-5 ○ 840 | St
 matt



30x120
 R10
 B
 V3



DCP84720 elfenbein | ivory
 DCP84721 braun-grau | brown-grey
 DCP84722 weiß | white
 DCP84723 hellgrau | light grey
 DCP84724 dunkelgrau | dark grey
 DCP84725 schwarz | black
 PEI 4-5 ○ 490 | St
 matt



DCPSE720 elfenbein | ivory
 DCPSE721 braun-grau | brown-grey
 DCPSE722 weiß | white
 DCPSE723 hellgrau | light grey
 DCPSE724 dunkelgrau | dark grey
 DCPSE725 schwarz | black
 PEI 4-5 ○ 370 | St
 matt

40x80
 30x60
 R10
 B
 V3



DSA89720 elfenbein | ivory
 DSA89721 braun-grau | brown-grey
 DSA89722 weiß | white
 DSA89723 hellgrau | light grey
 DSA89724 dunkelgrau | dark grey
 DSA89725 schwarz | black
 ○ 290 | St
 matt

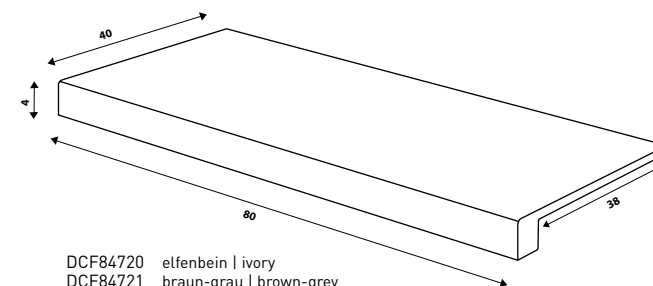


DSAS4720 elfenbein | ivory
 DSAS4721 braun-grau | brown-grey
 DSAS4722 weiß | white
 DSAS4723 hellgrau | light grey
 DSAS4724 dunkelgrau | dark grey
 DSAS4725 schwarz | black
 ○ 220 | St
 matt

80x9,5
 60x9,5
 R



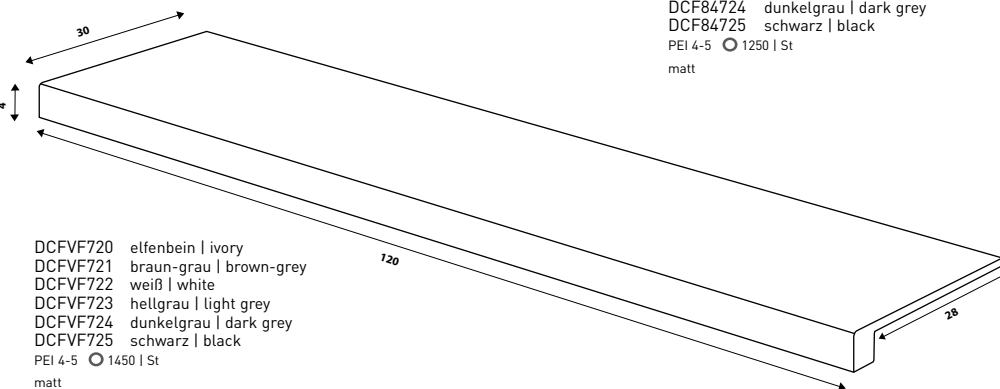
DSAPS720 elfenbein | ivory
 DSAPS721 braun-grau | brown-grey
 DSAPS722 weiß | white
 DSAPS723 hellgrau | light grey
 DSAPS724 dunkelgrau | dark grey
 DSAPS725 schwarz | black
 ○ 200 | St
 matt



DCF84720 elfenbein | ivory
 DCF84721 braun-grau | brown-grey
 DCF84722 weiß | white
 DCF84723 hellgrau | light grey
 DCF84724 dunkelgrau | dark grey
 DCF84725 schwarz | black
 PEI 4-5 ○ 1250 | St
 matt

45x8,5
 R

40x80
 R10
 B
 V3



DCFVF720 elfenbein | ivory
 DCFVF721 braun-grau | brown-grey
 DCFVF722 weiß | white
 DCFVF723 hellgrau | light grey
 DCFVF724 dunkelgrau | dark grey
 DCFVF725 schwarz | black
 PEI 4-5 ○ 1450 | St
 matt

NEWS

30x120
 R10
 B
 V3