



Výborné vlastnosti vysoce slinutých neglazovaných dlaždic s přírodním kolísáním kamenného designu v ploše předurčují sérii KAAMOS k širokému uplatnění jak v interiéru, tak exteriéru. Matný hladký povrch s elegantním kontrastem lesku zaručuje bezproblémovou čistitelnost při garanci protiskluznosti pro veřejné plochy.

„Řešení bez kompromisů.“



The excellent properties of the highly sintered unglazed tiles with natural variations in the stone design in the surface predestine the KAAMOS series for its wide range of applications both indoors and outdoors. The matt smooth surface with elegant gloss contrast ensures easy cleanability while guaranteeing anti-slip properties for public areas.

„A solution without compromises.“








výrobek product							
EN 14411 - G B1a STO č. 030 - 059824	dlaždice floor tile	dlaždice floor tile	dlaždice floor tile	dlaždice floor tile	dlaždice floor tile	dlaždice floor tile	dlaždice floor tile
	80×80 R	40×80 R	60×60 R	30×60 R	45×45 R	30×30	10×10 R
	798×798×10	398×798×10	598×598×10	298×598×10	445×445×8	298×298×8	98×98×10
povrch surface	mat matt	mat matt	mat matt	mat matt	mat matt	mat matt	mat matt
protiskluznost slip resistance	R10/A	R10/A	R10/A	R10/A	R10/A	R10/A	R10/B
koeficient tření - za sucha sliding friction coefficient	$\mu \geq 0,6$	$\mu \geq 0,6$	$\mu \geq 0,6$	$\mu \geq 0,6$	$\mu \geq 0,6$	$\mu \geq 0,6$	$\mu \geq 0,6$
barva color							
černá black	DAK81588 ○ 83 m ²	DAK84588 ○ 83 m ²	DAK63588 ○ 80 m ²	DAKSE588 ○ 80 m ²	DAK4H588 ○ 74 m ²	DAA34588 ○ 70 m ²	DAK12588 ○ 94 m ²
šedá grey	DAK81587 ○ 83 m ²	DAK84587 ○ 83 m ²	DAK63587 ○ 80 m ²	DAKSE587 ○ 80 m ²	DAK4H587 ○ 74 m ²	DAA34587 ○ 70 m ²	DAK12587 ○ 94 m ²
slonová kost ivory	DAK81585 ○ 83 m ²	DAK84585 ○ 83 m ²	DAK63585 ○ 80 m ²	DAKSE585 ○ 80 m ²	DAK4H585 ○ 74 m ²	DAA34585 ○ 70 m ²	DAK12585 ○ 94 m ²
běžová beige	DAK81586 ○ 83 m ²	DAK84586 ○ 83 m ²	DAK63586 ○ 80 m ²	DAKSE586 ○ 80 m ²	DAK4H586 ○ 74 m ²	DAA34586 ○ 70 m ²	DAK12586 ○ 94 m ²
běžovošedá beige grey	DAK81589 ○ 83 m ²	DAK84589 ○ 83 m ²	DAK63589 ○ 80 m ²	DAKSE589 ○ 80 m ²	DAK4H589 ○ 74 m ²	DAA34589 ○ 70 m ²	DAK12589 ○ 94 m ²
logistická data logistic information							
	2	4	3	6	6	13	10
	1,6	3,1	2,8	5,6	5	11	11
	1,28	1,28	1,08	1,08	1,21	1,18	0,91
	42	42	32	40	34	48	56
	53,76	53,76	34,56	43,2	41,14	56,64	50,96
	28,0	28,0	23,7	23,7	21,1	20,5	19,9
	21,9	21,9	21,9	21,9	17,4	17,4	21,9
	1 202	1 202	782	971	741	1 011	1 142

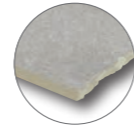
mozaika set 30×30 cm mosaic sheet 30×30 cm	schodovka step tile	schodovka step tile	schodová tvarovka special step tile	sokl skirting plinth	sokl skirting plinth	sokl skirting plinth
5×5 R	40×80 R	30×60 R	40×80 R	80×9,5 R	60×9,5 R	45×8,5 R
48×48×10	398×798×10	298×598×10	398×798×10	798×95×10	598×95×10	445×85×8
mat matt	mat matt	mat matt	mat matt	mat matt	mat matt	mat matt
R10/B	R10/A	R10/A	R10/A			
$\mu \geq 0,6$	$\mu \geq 0,6$	$\mu \geq 0,6$	$\mu \geq 0,6$			
DDM06588 ○ 72 set	DCP84588 ○ 78 ks	DCPSE588 ○ 72 ks	DCF84588 ○ 108 ks	DSA89588 ○ 72 ks	DSAS4588 ○ 56 ks	DSAPS588 ○ 54 ks
DDM06587 ○ 72 set	DCP84587 ○ 78 ks	DCPSE587 ○ 72 ks	DCF84587 ○ 108 ks	DSA89587 ○ 72 ks	DSAS4587 ○ 56 ks	DSAPS587 ○ 54 ks
DDM06585 ○ 72 set	DCP84585 ○ 78 ks	DCPSE585 ○ 72 ks	DCF84585 ○ 108 ks	DSA89585 ○ 72 ks	DSAS4585 ○ 56 ks	DSAPS585 ○ 54 ks
DDM06586 ○ 72 set	DCP84586 ○ 78 ks	DCPSE586 ○ 72 ks	DCF84586 ○ 108 ks	DSA89586 ○ 72 ks	DSAS4586 ○ 56 ks	DSAPS586 ○ 54 ks
DDM06589 ○ 72 set	DCP84589 ○ 78 ks	DCPSE589 ○ 72 ks	DCF84589 ○ 108 ks	DSA89589 ○ 72 ks	DSAS4589 ○ 56 ks	DSAPS589 ○ 54 ks
3	2	6	2	10	13	25
11	3,1	5,6	-	13,2	17,5	26,1
0,27	0,64	1,08	-	0,76	0,74	0,96
-	-	40	-	-	-	-
-	-	43,20	-	-	-	-
5,9	14,1	23,7	16,5	16,7	16,2	16,7
21,9	21,9	21,9	-	21,9	21,9	17,4
-	-	971	-	-	-	-



industrial outdoor

výrobek product	 15mm	 20mm	 20mm
EN 14411 - 6 B1a STO č. 030 - 059824	dlaždice floor tile	dlaždice floor tile	schodovka step tile
	60×60 	60×60 	60×60 
	598×598×15	598×598×20	598×598×20
povrch surface	mat matt	relief SR	relief SR
protiskluznost slip resistance	R10/A	R11/B	R11/B
koeficient tření - za sucha sliding friction coefficient	$\mu \geq 0,6$	$\mu \geq 0,7$	$\mu \geq 0,7$
barva color			
černá black	DAK66588 ○ 88 m ²	DAR66588 ○ 89 m ²	DCH66588 ○ 92 ks
šedá grey	DAK66587 ○ 88 m ²	DAR66587 ○ 89 m ²	DCH66587 ○ 92 ks
slonová kost ivory	DAK66585 ○ 88 m ²	DAR66585 ○ 89 m ²	DCH66585 ○ 92 ks
běžová beige		DAR66586 ○ 89 m ²	DCH66586 ○ 92 ks
běžovošedá beige grey		DAR66589 ○ 89 m ²	DCH66589 ○ 92 ks
logistická data logistic information			
	2	2	2
	2,8	2,8	-
	0,72	0,72	-
	32	30	-
	23,04	21,6	-
	23,2	32,0	32,0
	32,3	44,4	-
	758	985	-





barvy | colors



Dxxxx588
černá | black



Dxxxx587
šedá | grey



Dxxxx585
slonová kost | ivory



Dxxxx586
béžová | beige



Dxxxx589
béžovošedá | beige-grey

Všechny výrobky celé série vykazují velké odchylky odstínové difference V3. | All products of the entire batch show big deviations in shade difference V3. Barevné odstíny, které jsou zde vyobrazeny, mají pouze orientační charakter. | The colour shades shown are for orientation only.



povrchy | surfaces



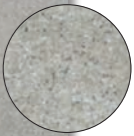
mat | matt

R10/A - R10/B
 $\mu > 0,6$



SR (outdoor)

R11/B
 $\mu > 0,7$

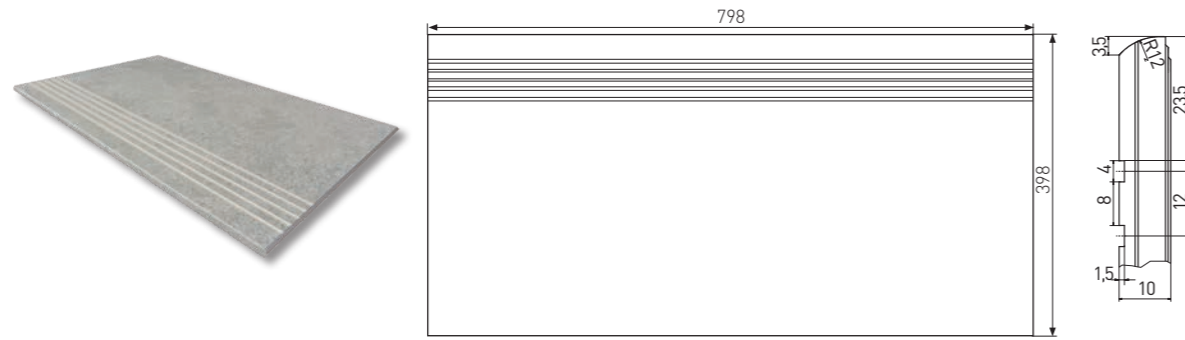


SR... - Reliéfní povrch | Relief surface

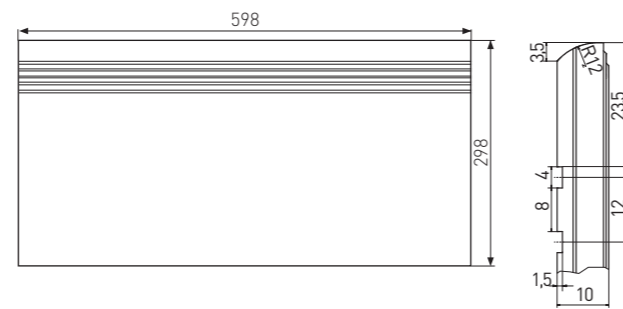


doplňky | special pieces

schodovka | step tile | **DCP84...** | 398×798×10 mm



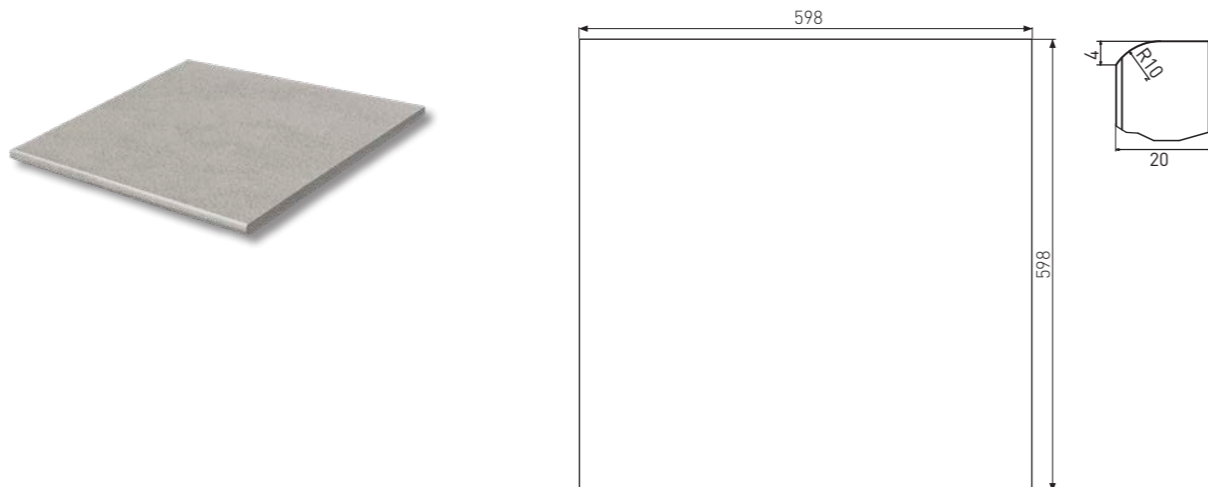
schodovka | step tile | **DCPSE...** | 298×598×10 mm



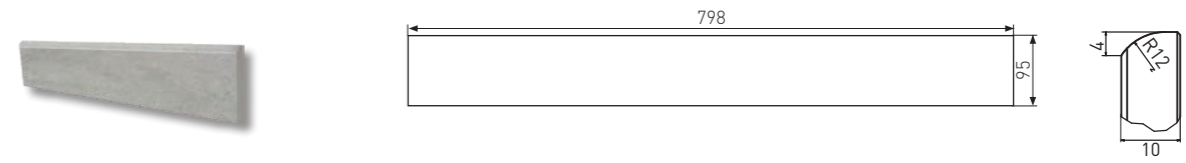
schodová tvarovka | special step tile | **DCF84...** | 398×798×10 mm



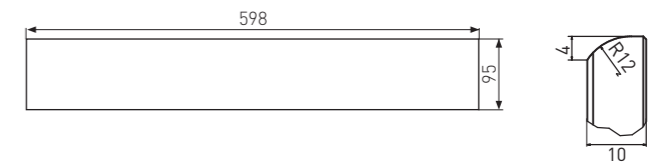
schodovka | step tile | **DCH66...** | 598×598×20 mm



sokl | skirting plinth | **DSA89...** | 798×95×10 mm



sokl | skirting plinth | **DSAS4...** | 598×95×10 mm



sokl | skirting plinth | **DSAPS...** | 445×85×8 mm

